

# OMNILINK

## One Piece Active GPS Tracking System



### *The Most Efficient Offender Management Solution*

Omnilink provides a proven technology that works to prevent crime, maintain offender compliance, and increase the effectiveness and efficiency of offender management.

Omnilink Systems solution consists of a unique single unit ankle bracelet and secure web-based application. The device is unique because it locates where no other devices locate (in shopping malls, houses, buses, cars, etc.) due to the use of a unique combination of the right mix of technologies. Additionally, it is the only single unit device that offenders can bathe and swim in. The device has the longest battery life in the industry, about 60 hours between charges, without requiring the offender to remember to carry extra batteries and accessories. No tools, cutting, or signal acquisition is necessary for installation. This cuts down on false alerts, improper installations, and time spent hooking up an offender is dramatically reduced (average installation time is about 4 minutes).

**No More False Alerts** - Many multi-piece devices are plagued with false alerts and single unit devices are plagued with constant loss of GPS signal. Omnilink's solution does not have these types of failures and false alerts. An Omnilink alert means that there is really something to investigate. Other systems require constant communication with the offender when the systems break, regular loss of GPS, or the offender forgets a part of the system at home. The officer does not need to train the offender on the device as it works out of the box. The officer can easily move the offender between different levels of supervision without inviting the offender to the agency to swap equipments and train offender on the new equipment. The officer simply clicks a button on the software and switches the offender from passive monitoring to active, for example, without the offender even knowing it.

**Improved Caseload Management** – Omnilink's exception based management technology means that once the monitoring rules for an offender is configured, the Probation Officer no longer needs to log into the application to see what the offender is doing. The officer will automatically be notified by the Omnilink's system if any kind of violation or anomaly occurs. The notification is sent in ways that the officer prefers – text message, email, fax, voice call, immediate, summary at the end of day, etc.

**General Security Services Corporation**  
**952-858-5061**

If the officer logs into the system, the homepage shows a snapshot of the status of the entire officer's caseload and if there are any red flags, the system guides the officer in drilling down to better understand what has transpired. Omnilink's software can be viewed through many hand held mobile devices as well so the officer can view the status and location of any or all offenders from anywhere and receive turn-by-turn directions to get to those offenders anytime.

The exception based management system significantly reduces the amount of time the officer needs to spend on each offender. This means that one officer can manage a significantly larger number of offenders or spend more time working on other issues.

**Victim Protection** – For officers that deal with offenders that need to be kept away from other people, whether other offenders or victims and potential victims, Omnilink's technology makes it very easy to enforce that requirement.

All the officer needs to do is ask the person that needs to be protected to opt in with their personal cell phone. Once the person opts in, the person's location is monitored through their cell phone. If the offender comes within proximity of this person anywhere, anytime, the person will be notified automatically by the Omnilink system. The officer will also receive this notification in real time. This same technology for keeping offenders away from victims in real time can be used to keep offenders away from each other by creating mobile zones between the offenders' ankle bracelets.

## SUMMARY

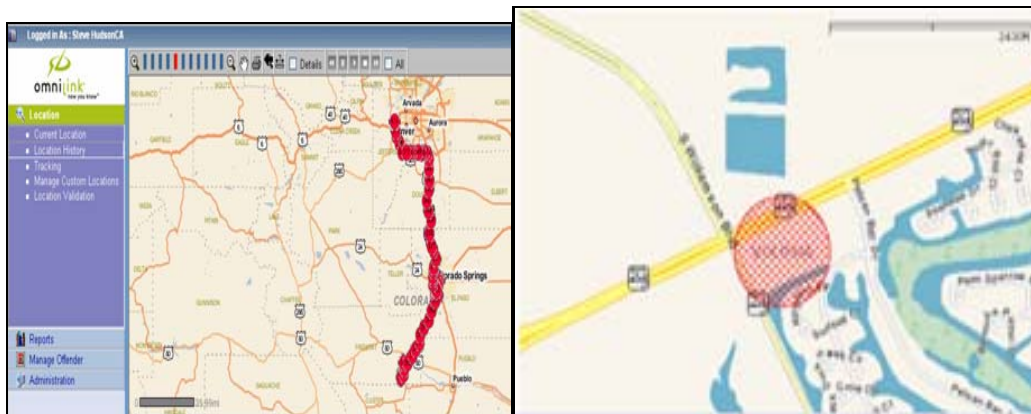
Omnalink's technology dramatically increases the efficiency of monitoring officers through the reduced amount of work required to manage an offender – from the very small amount of time required to setup the very simple single unit device, to the exception based management approach which requires little or no ongoing management time per offender, yet provides the highest level of effective offender supervision and compliance enforcement.

Some unique attributes of the Omnilink solution include the following:

1. Omnilink provides the only device that actually works in the most impaired environments. It locates inside buildings, shopping mall, vehicles, subways, etc, using the cellular network and other first-of-its kind technologies to locate in places that other devices do not work.
2. Omnilink provides a true single unit solution that is 100% water proof (not just water resistant). No accessories needed, no home unit needed.
3. Omnilink provides the most accurate location in the industry, using our proprietary precision engine algorithms. This eliminates drift – where the point on the map is incorrect.

## FOR MORE INFORMATION

Please contact Steve Leopold at (952) 858-5061 or at [stevel@gssc.net](mailto:stevel@gssc.net)



**General Security Services Corporation**  
**952-858-5061**